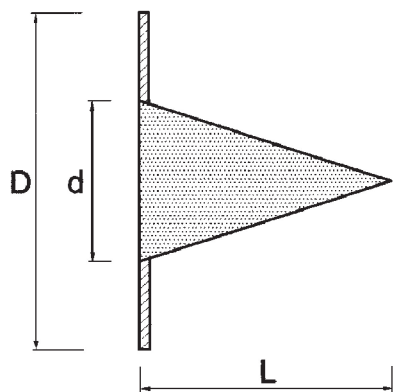


FILTRI TEMPORANEI - Temporary filters - Filtres temporaires



Spessore : 5 mm
thickness - épaisseur

RETE INOX n° 35 AISI 304
Stainless steel net
Filet en acier inox

	D	d	L	Cod.
2"	105	50	70	4.52.14
2" 1/2	125	65	100	4.52.15
3"	140	80	160	4.52.16
4"	160	100	170	4.52.17
5"	188	129	190	4.52.18
6"	215	150	230	4.52.19
8"	270	200	260	4.52.20

COPRIM - ITALY

FILO DA 0,4 mm Wire - fil

SUPERFICIE UTILE DI PASSAGGIO 0,561 - Passage useful surface - Surface utile de passage

CORONA IN ACCIAIO ZINCATO CON RIGATURA PER GUARNIZIONI

Zinc plated steel ring with scorings for gaskets - Anneau en acier zingué avec rayage pour joints



FILTRI IN ALLUMINIO

ALLUMINIUM FILTERS

filtres en aluminium

P max 6 bar

	Cod.
Ø 1/2"	4.52.70
3/4"	4.52.71
1"	4.52.72
1" 1/4	4.52.73
1" 1/2	4.52.74
2"	4.52.75

DN 65 PN 16 4.52.77

DN 80 PN 16 4.52.78

FILTRO M - F 1" a rete PN 40

NET FILTER

FILTRE 1" au réseau

COPRIM - ITALY



GPL - LPG

Cod. **6.15.01**

METANO

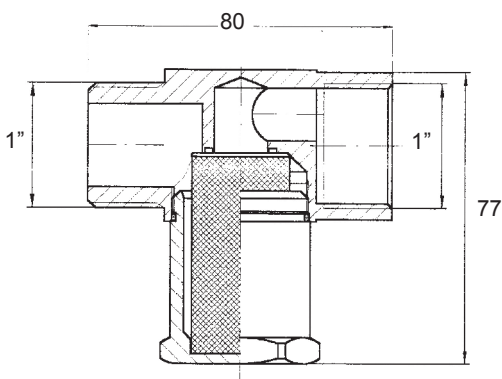
NATURAL GAS

GAZ NATREL

Cod. **6.15.011**

Specifica materiali - Features - Caractéristiques

- Corpo Acciaio AVP galvanizzato
Steel body - Corp en acier
- Coperchio Acciaio AVP galvanizzato
Steel cover - Covercle en acier
- Cartuccia Rete inox 100 micron - GPL - LPG
100 μ stainless steel cartridge - Cartouche en acier inox 100 μ
- Cartuccia 20 micron - Metano - Natural gas
Resin treated fiber - rot proof water-repellent - Fibre traitée avec résines
- Fibra trattata con resine - imputrescibile e idrorepellente
Fibre treated with resins
- Anelli OR NBR
O ring - Anneaux
- Filettatura gas cilindrica
Cylindric gas thread - Filetage gaz cylindrique



FILTRI A Y IN ACCIAIO - Y STEEL FILTER - FILTRE AU Y EN ACIER

COPRIM - ITALY

€ ISPEL 0100
modulo H - H1
 Garanzia di Qualità Totale

PED
 Pressure
 Equipment
 Directive



Test pressione corpo 100 bar

Body pressure test

Test pression corps

Test pressione pneumatica 10 bar

Pneumatic pressure test

Test pression pneumatique

MATERIALI E CARATTERISTICHE COSTRUTTIVE

Material and construction features

Matériels et caractéristiques constructives

Corpo in acciaio ASTM A 352 LCC

Steel body - Corp en acier

Temperatura di lavoro -40 +120 °C

Work temperature - Température de travail

Cartuccia in acciaio inox

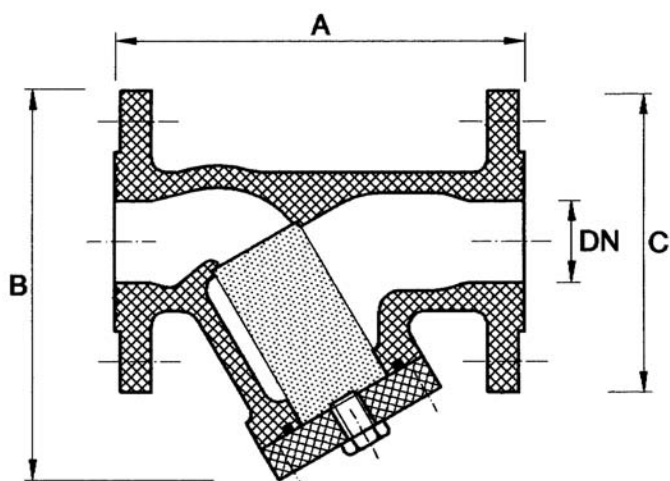
Stainless steel cartridge - Cartuche en acier inox

IMPIEGHI - Use - Emplois

Per acqua, gas, GPL, liquidi non aggressivi e vapore.

For water, gas, lpg, not aggressive liquid and steam.

Pour eau, gaz, gpl, liquides pas agressif, vapeur.



ANSI 300 +20 %

DN	A	B	C	Peso Kg	Cod.
25	160	150	115	5,5	6.15.05
32	180	180	140	7,5	6.15.10
40	200	190	150	8	6.15.15
50	230	240	165	12	6.15.20
65	290	260	185	15	6.15.25
80	310	260	200	21	6.15.30
100	350	320	235	28	6.15.35
150	380	350	300	35	6.15.40

GIUNTI DIELETRICI

DIELECTRIC JOINT

JOINT DIELECTRIQUES

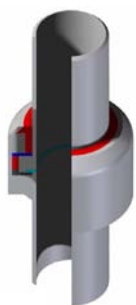
COPRIM - ITALY

PN pressione nominale
nominal pressure
 pression nominale

MATERIALE: ACCIAIO
 TEMPERATURA DI ESERCIZIO: da -15°C a +70°C
 TENSIONE DI ISOLAMENTO: 3 Kw
 RESISTENZA DI ISOLAMENTO IN ARIA: 5 M om
 VERNICE EPOSSIFENOLICA

Material: steel
 Working temperature: from -15°C to 70 °C
 Voltage of air insulation: 3 Kw
 Insulation resistance in the air: 5 M om
 Epoxy-phenolic paint

Matériel: acier
 Température d'exercice: de -15°C a 70°C
 Tension d'isolement en air: 3 Kw
 Résistance d'isolement en air: 5 M om
 Peinture epoxy-phenolic



A SILDARE
WELDABLE
 SOUDABLE



FILETTATI
THREADED
 FILETÉE



	A	cod.	
PN 10	220	3/4" 6.01.02	
	230	1" 6.01.03	
	250	1"1/4 6.01.04	
	260	1"1/2 6.01.05	
	290	2" 6.01.06	
	330	2"1/2 6.01.07	
	350	3" 6.01.08	
	PN 25	250	3/4" 6.01.10
250		1" 6.01.11	
300		1"1/4 6.01.12	
300		1"1/2 6.01.13	
350		2" 6.01.14	
350		2"1/2 6.01.15	
400		3" 6.01.16	
400		4" 6.01.17	
500		5" 6.01.18	
500		6" 6.01.19	
500		8" 6.01.20	
700		10" 6.01.21	
700	12" 6.01.22		
PN 100	250	1/2" 6.01.40	
	250	3/4" 6.01.41	
	250	1" 6.01.42	
	300	1"1/4 6.01.43	
	300	1"1/2 6.01.44	
	350	2" 6.01.45	
	350	2"1/2 6.01.46	
	500	3" 6.01.47	
	500	4" 6.01.48	
	600	5" 6.01.49	
	600	6" 6.01.50	
	600	8" 6.01.51	
	800	10" 6.01.52	
	800	12" 6.01.53	
	PN 10	100	1/2" 6.01.60
		110	3/4" 6.01.61
120		1" 6.01.62	
135		1"1/4 6.01.63	
145		1"1/2 6.01.64	
150		2" 6.01.65	
M/F		170	2"1/2 6.01.66
		200	3" 6.01.67
			4" 6.01.68