



COPRIM

VAPORIZZATORE AD ACQUA **GPL**

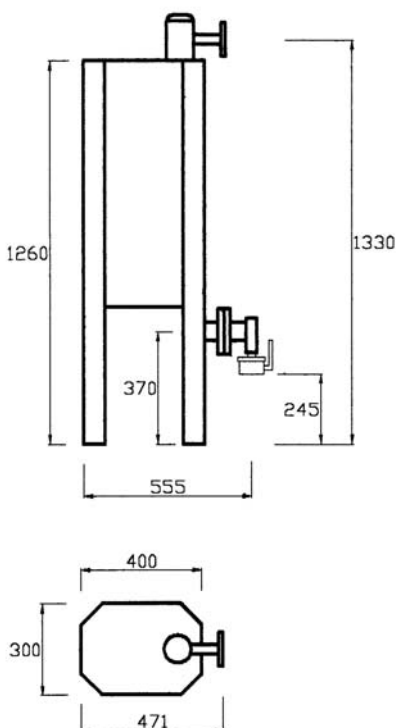
LPG WATER VAPORIZER

Tipo feed-out

TS - 40 °C



	Cod.	
100 kg/h	1.03.70	
200 kg/h	1.03.75	



Contenuto acqua 45 lt. - *water contained*

Entrata GPL DN 15 - *inlet lpg*
Uscita GPL DN 25 - *outlet lpg*

Entrata acqua 1" - *inlet water*
Uscita acqua 1" - *outlet water*

PESO 90 kg - *weight*

ACCESSORI - ACCESSORIES

- Manometro Ø 60 25 bar - *manometer*
- Termometro -20 + 120 °C - *thermometer*
- Valvola di sicurezza 1/2" 18 bar - *safety valve*
- Valvola sfiato aria - *air breather valve*
- Valvola sicurezza acqua 1,5 bar - *water safety valve*
- Filtro - *filter*
- Valvola a sfera DN 15 PN 40 - *ball valve*



COPRIM

VAPORIZZATORE AD ACQUA **GPL**

LPG WATER VAPORIZER

300 kg/h

Tipo feed-out

TS - 40 °C

Cod. 1.03.80



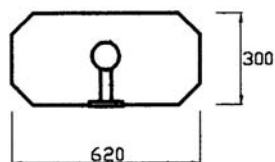
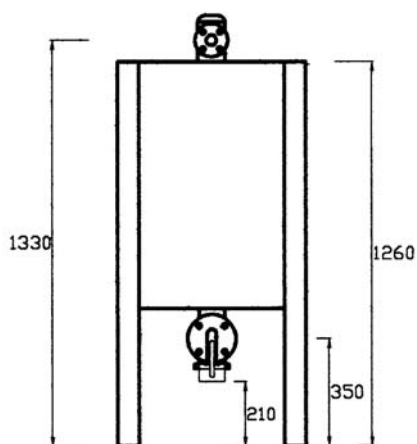
	ISPEL 0100	PED
	modulo H	Pressure Equipment Directive
Garanzia di Qualità Totale		

Contenuto acqua 70 lt. - *water contained*

Entrata GPL DN 15 - *inlet lpg*
Uscita GPL DN 25 - *outlet lpg*

Entrata acqua 1" - *inlet water*
Uscita acqua 1" - *outlet water*

PESO 146 kg - *weight*



ACCESSORI - ACCESSORIES

- Manometro Ø 60 25 bar - *manometer*
- Termometro -20 + 120 °C - *thermometer*
- Valvola di sicurezza 1/2" 18 bar - *safety valve*
- Valvola sfiato aria - *air breather valve*
- Valvola sicurezza acqua 1,5 bar - *water safety valve*
- Filtro - *filter*
- Valvola a sfera DN 15 PN 40 - *ball valve*

VAPORIZZATORE AD ACQUA GPL

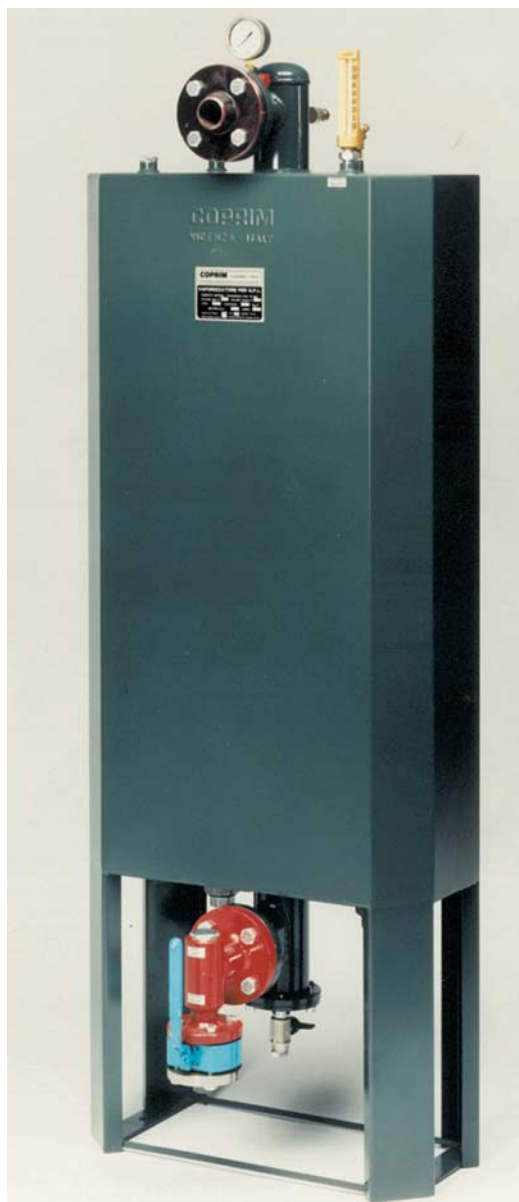
LPG WATER VAPORIZER

500 kg/h

Tipo feed-out

TS - 40 °C

Cod. 1.03.85



COPRIM



Contenuto acqua 88 lt. - *water contained*

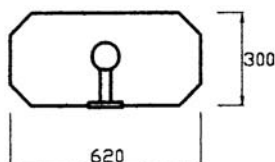
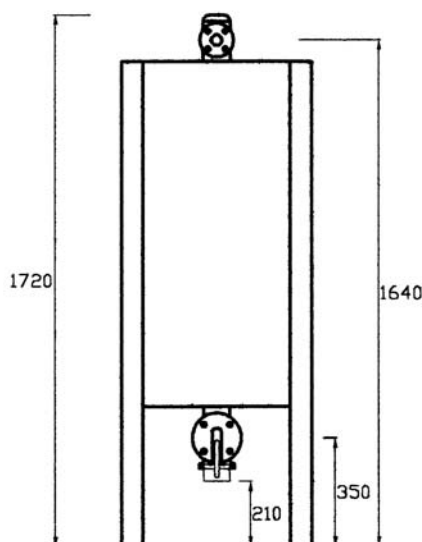
Entrata GPL DN 25 - *inlet lpg*

Uscita GPL DN 40 - *outlet lpg*

Entrata acqua 1" - *inlet water*

Uscita acqua 1" - *outlet water*

PESO 190 kg - *weight*



ACCESSORI - ACCESSORIES

Manometro Ø 60 25 bar - *manometer*

Termometro -20 + 120 °C - *thermometer*

Valvola di sicurezza 1/2" 18 bar - *safety valve*

Valvola sfiato aria - *air breather valve*

Valvola sicurezza acqua 1,5 bar - *water safety valve*

Filtro - *filter*



Valvola a sfera DN 25 PN 40 - *ball valve*



VAPORIZZATORE AD ACQUA GPL

LPG WATER VAPORIZER

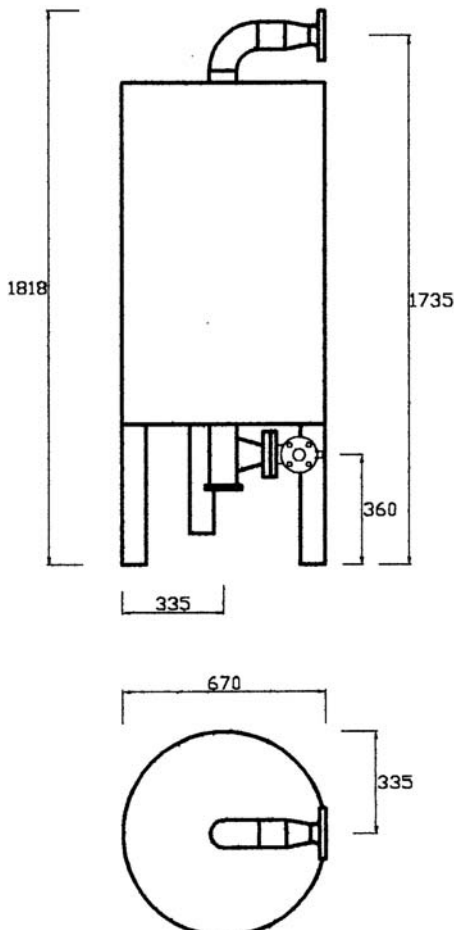
Tipo feed-out

	Cod.	
750 kg/h	1.03.90	
1.000 kg/h	1.03.91	

TS - 40 °C



COPRIM



Contenuto acqua 250 lt. - *water contained*

Entrata GPL DN 25 - *inlet lpg*
Uscita GPL DN 50 - *outlet lpg*

Entrata acqua 1" 1/4 - *inlet water*
Uscita acqua 1" 1/4 - *outlet water*

PESO 290 kg - *weight*

ACCESSORI - ACCESSORIES

- Manometro Ø 60 25 bar - *manometer*
- Termometro -20 + 120 °C - *thermometer*
- Valvola di sicurezza 1/2" 18 bar - *safety valve*
- Valvola sfiato aria - *air breather valve*
- Valvola sicurezza acqua 1,5 bar - *water safety valve*
- Filtro - *filter*
- Valvola a sfera DN 25 PN 40 - *ball valve*



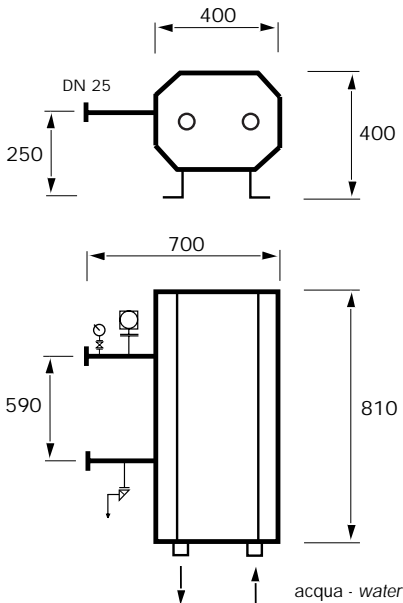
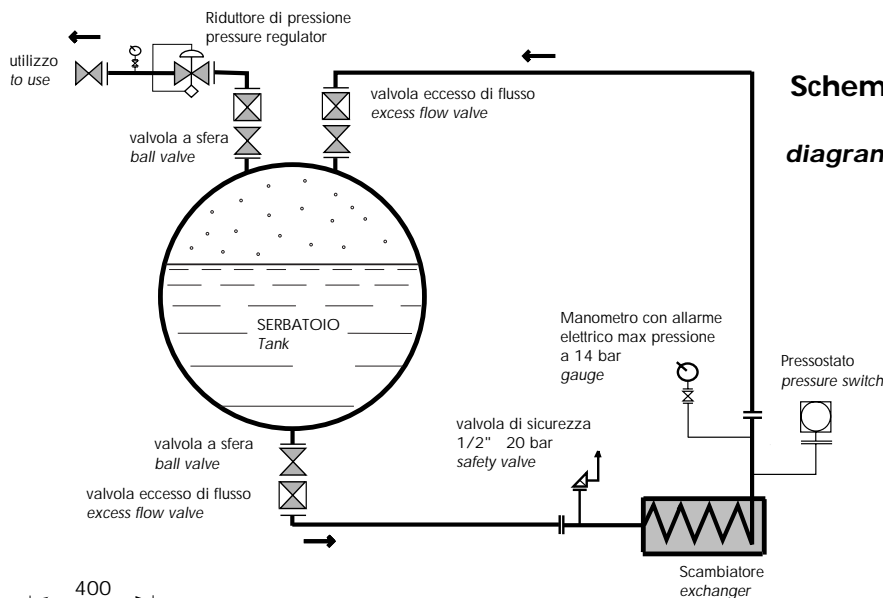
COPRIM

VAPORIZZATORE FEED-BACK **GPL** AD ACQUA

WATER VAPORIZER FEED - BACK

Cod.

100 kg/h	1.01.66	
150 kg/h	1.01.68	
300 kg/h	1.01.70	



Accessori - equipments :

Circuito Gas - gas circuit

- valvola di sicurezza 20 bar - safety valve
- manometro 25 bar con contatti elettrici - gauge
- pressostato Eex-d - pressure switch EEx-d

Circuito Acqua - water circuit

- valvola di sfogo - vent valve
- termometro a colonna - thermometer
- valvola di sicurezza 1,5 bar - safety valve

TS - 40 °C

C E

ISPESL 0100

modulo H

Garanzia di Qualità Totale

PED
Pressure
Equipment
Directive