



**COPRIM**

# VAPORIZZATORE ELETTRICO GPL

LPG ELECTRIC VAPORIZER EExd

## 50 kg/h Tipo feed-out

TS - 40 °C

Cod. 1.01.15



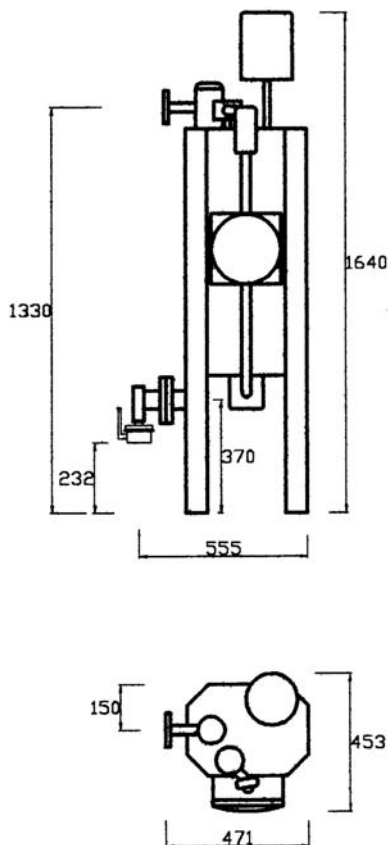
**TUV 03 ATEX 2131 X**

Contenuto acqua 43 lt. - *water contained*

Entrata GPL DN 15 - *inlet lpg*

Uscita GPL DN 25 - *outlet lpg*

PESO 105 kg - *weight*



### ACCESSORI - ACCESSORIES

Manometro Ø 60 25 bar - *manometer*

Valvola di sicurezza 1/2" 18 bar - *safety valve*

Termometro -20 + 120 °C - *thermometer*

Vaschetta espansione acqua - *water expansion pot*

Filtro - *filter*

Valvola a sfera DN 15 PN 40 - *ball valve*

Resistenza elettrica EEx-d 8 kw - *electrical resistance*

Connessioni EEx-d - *EExd connections*

BOX EExd contenente n° 3 termostati

*EExd command board containing n° 3 thermostat*



**COPRIM**

# VAPORIZZATORE ELETTRICO **GPL**

*LPG ELECTRIC VAPORIZER EExd*

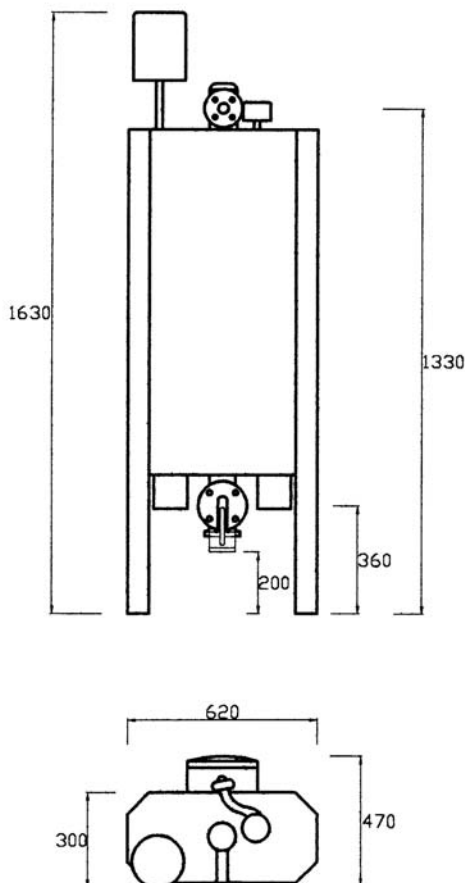
## 100 kg/h Tipo feed-out

**TS - 40 °C**

**Cod. 1.01.17**



**TUV 03 ATEX 2131 X**



Contenuto acqua 70 lt. - *water contained*

Entrata GPL DN 15 - *inlet lpg*  
Uscita GPL DN 25 - *outlet lpg*

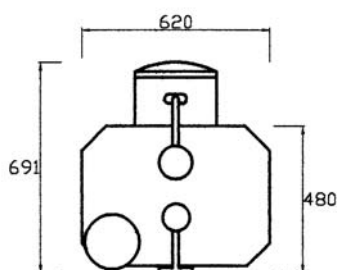
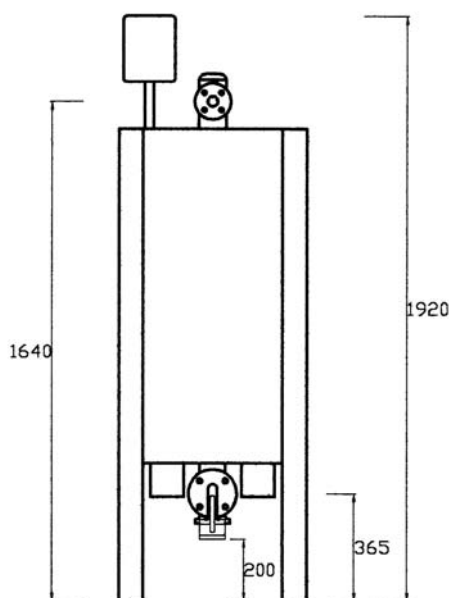
PESO 160 kg - *weight*

### ACCESSORI - ACCESSORIES

- Manometro Ø 60 25 bar - *manometer*
- Valvola di sicurezza 1/2" 18 bar - *safety valve*
- Termometro -20 + 120 °C - *thermometer*
- Vaschetta espansione acqua - *water expansion pot*
- Filtro - *filter*
- Valvola a sfera DN 15 PN 40 - *ball valve*
- n°2 Resistenze elettr. EExd 8 kw - *electrical resistance*
- Connessioni EExd - *EExd connections*
- BOX EExd contenente n° 3 termostati  
*EExd command board containing n° 3 thermostat*



**COPRIM**



# VAPORIZZATORE ELETTRICO GPL

LPG ELECTRIC VAPORIZER EExd

## Tipo feed-out

TS - 40 °C



**TUV 03 ATEX 2131 X**

	Cod.	
150 kg/h	1.01.19	
200 kg/h	1.01.21	

Contenuto acqua 180 lt. - *water contained*

Entrata GPL DN 15 - *inlet lpg*  
 Uscita GPL DN 25 - *outlet lpg*

PESO 190 kg - *weight*

### ACCESSORI - ACCESSORIES

- Manometro Ø 60 25 bar - *manometer*
- Valvola di sicurezza 1/2" 18 bar - *safety valve*
- Termometro -20 + 120 °C - *thermometer*
- Vaschetta espansione acqua - *water expansion pot*
- Filtro - *filter*
- Valvola a sfera DN 15 PN 40 - *ball valve*
- Resistenze elettr. EExd 8 kw - *electrical resistance*  
 ( n°3 150 kg/h - n°4 200 kg/h )
- Connessioni EExd - *EExd connections*
- BOX EExd contenente n° 4 termostati  
*EExd command board containing n° 4 thermostat*



# VAPORIZZATORE ELETTRICO GPL

LPG ELECTRIC VAPORIZER EExd

## Tipo feed-out

Con quadro comando EExd  
With EExd command board

COPRIM

TS - 40 °C



	Cod.
25 kg/h	1.01.62
50 kg/h	1.01.64
100 kg/h	1.01.66
150 kg/h	1.01.68
200 kg/h	1.01.70



TUV 03 ATEX 2131 X

### ACCESSORI - ACCESSORIES

Manometro Ø 60 25 bar	- manometer
Valvola di sicurezza 1/2" 18 bar	- safety valve
Termometro -20 + 120 °C	- thermometer
Vaschetta espansione acqua	- water expansion pot
Filtro	- filter
Valvola a sfera DN 15 PN 40	- ball valve
Conessioni EExd	- EExd connections

# VAPORIZZATORI ELETTRICI **GPL**

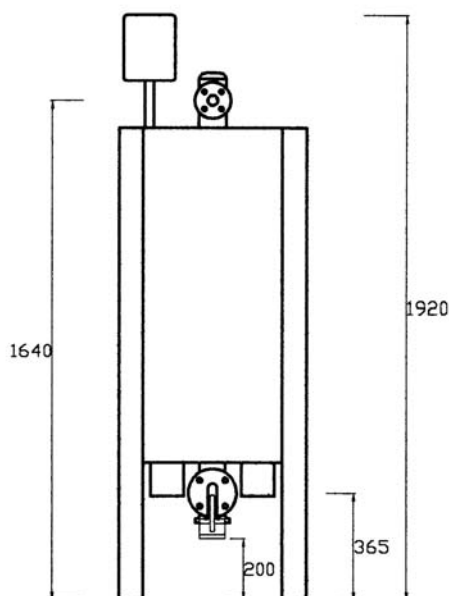
LPG ELECTRIC VAPORIZER EExd

## Tipo feed-out



**TUV 03 ATEX 2131 X**

**TS - 40 °C**



**300 kg/h**  
con soli termostati  
in box EExd  
With thermostat in EExd box

Cod.  
**1.01.22**

**300 kg/h**  
con quadro  
comando EExd  
With EExd command board

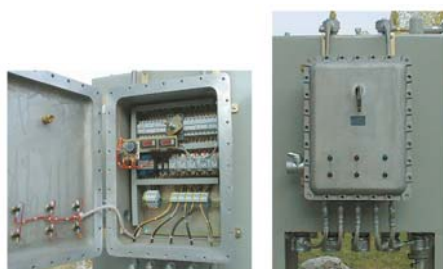
Cod.  
**1.01.72**

**500 kg/h**  
con soli termostati  
in box EExd  
With thermostat in EExd box

Cod.  
**1.01.30**

**500 kg/h**  
con quadro  
comando EExd  
With EExd command board

Cod.  
**1.01.80**



# VAPORIZZATORE GPL FEED-BACK *elettrico*

Con box EExd contenente  
solamente i termostati

With EExd box containing only thermostat



TS - 40 °C

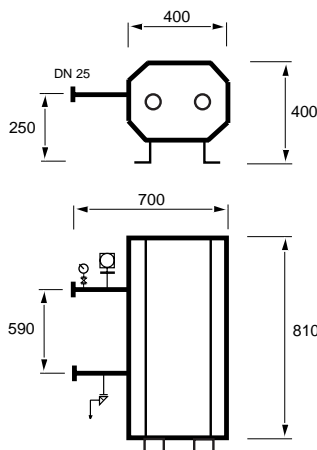
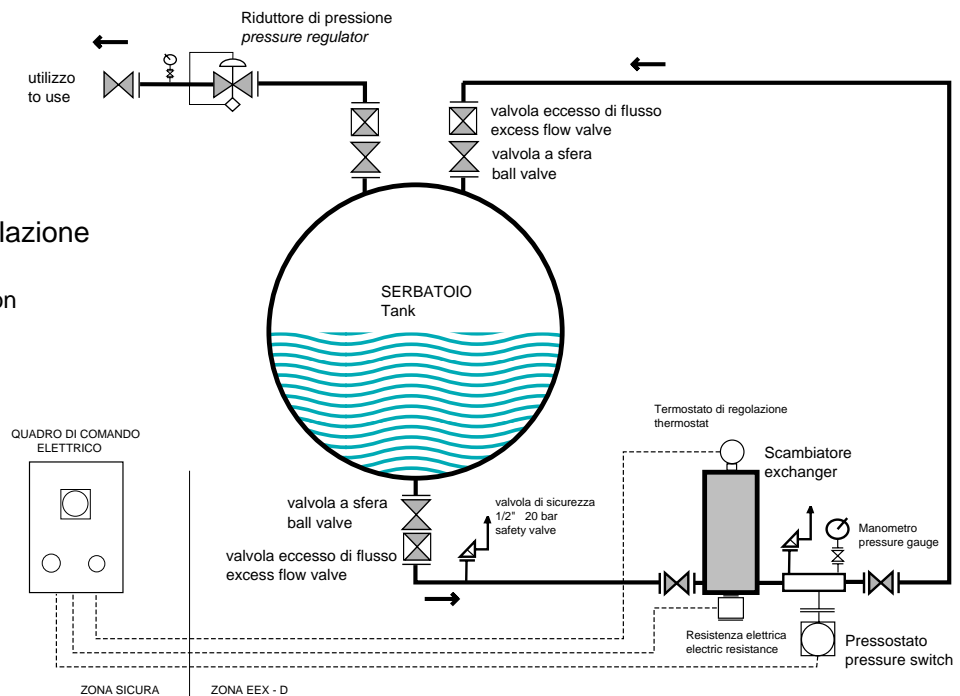
	<b>ISPEL 0100</b>	<b>PED</b>
	<b>modulo H</b>	<b>Pressure Equipment Directive</b>
	<b>Garanzia di Qualità Totale</b>	

	Cod.
25 kg/h	1.02.25
50 kg/h	1.02.26
100 kg/h	1.02.27
150 kg/h	1.02.28
200 kg/h	1.02.29

TUV 03 ATEX 2131 X

Schema di installazione

diagram of installation



## Accessori - equipments :

- valvola di sicurezza 20 bar - safety valve
- manometro 25 bar con contatti elettrici - gauge
- pressostato EEx-d - pressure switch EEx-d
- termometro a colonnina - thermometer
- vaschetta espansione acqua - water expansion pot

- Sicurezze: - pressostato a sicurezza intrinseca  
Safety
- manometro con contatti elettrici max. pressione a sicurezza intrinseca



# VAPORIZZATORE **GPL** FEED-BACK *elettrico*

Con quadro comando elettrico  
box EExd

With EExd command board

Cod.

25 kg/h	1.02.35
50 kg/h	1.02.36
100 kg/h	1.02.37
150 kg/h	1.02.38
200 kg/h	1.02.39
300 kg/h	1.02.40

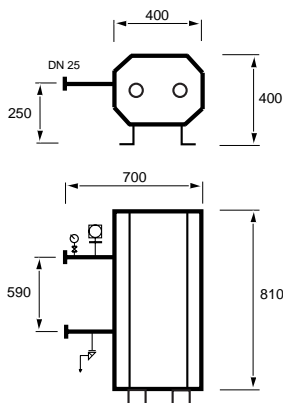
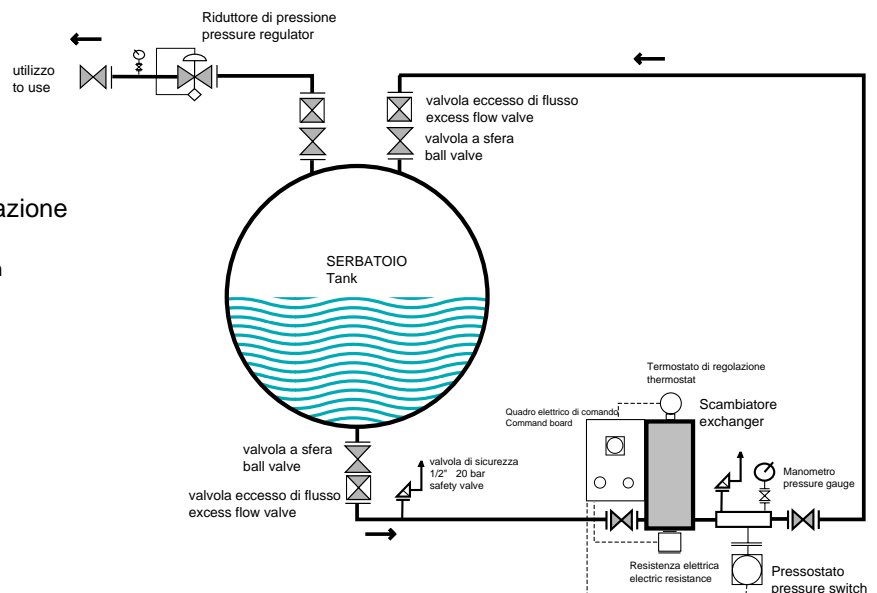


TS - 40 °C

**ISPEL 0100** **PED**  
**modulo H** **Pressure Equipment Directive**  
 Garanzia di Qualità Totale

**TUV 03 ATEX 2131 X**

Schema di installazione  
 diagram of installation



### Accessori - equipments :

- valvola di sicurezza 20 bar - safety valve
- manometro 25 bar con contatti elettrici - gauge
- pressostato Eex-d - pressure switch Eex-d
- termometro a colonnina - thermometer
- vaschetta espansione acqua - water expansion pot

Sicurezze: - pressostato a sicurezza intrinseca

- manometro con contatti elettrici max. pressione a sicurezza intrinseca